

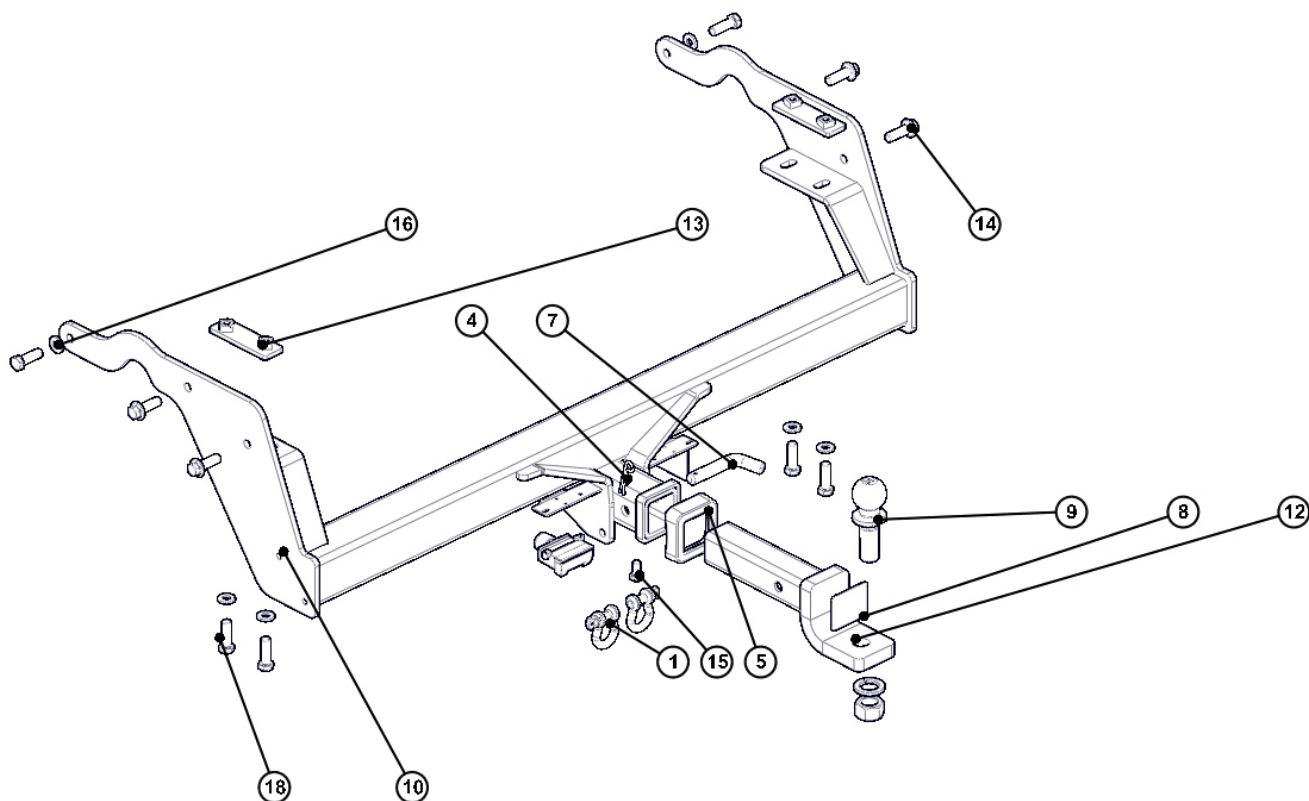


FITTING INSTRUCTIONS

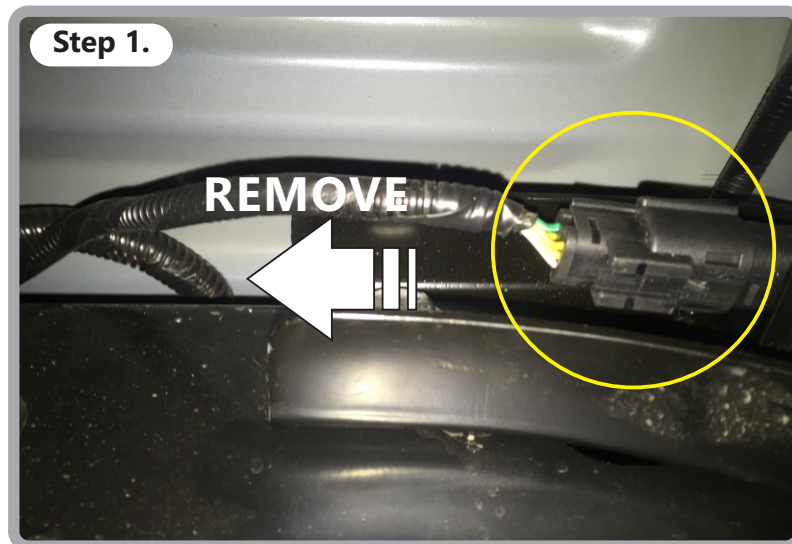
2012-on MAZDA BT50 & FORD RANGER



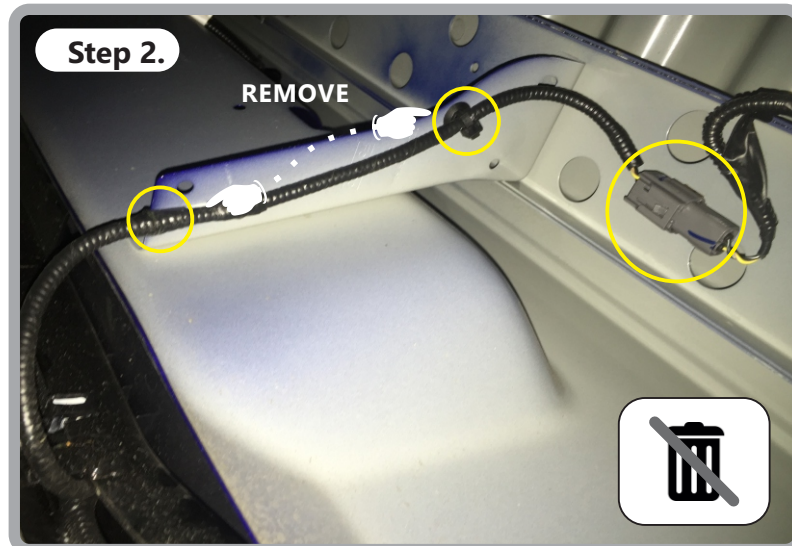
Suite 6, 48 Aviation Ave,
Mt Maunganui
New Zealand



Item No.	Part Number	Description	QTY
1	Bow Shackle	Bow Shackle	2
4	4RC	4mm R Clip	1
5	AP-TPG-01	Garnish	1
7	J-PIN-1369	16mm J-Pin	1
8	TZ1103-1LBL	Rating Label	2
9	T4363Z	1 7/8 x 1" 3500Kg Towball	1
10	TZ1103D-1001-000	Beam Assembly	1
12	TZ1103D-1002-000	Tongue	1
13	TZ1103D-1003-000	Nut Plate	2
14	M12 x 1.75 x 40	Retained from Vehicle	4
15	ZENG 25 x 10	M10 x 1.5 x 25	1
16	HRW 12	M12 Hardened Washer	6
18	ZENG 35 x 12	M12 x 1.75 x 35	6



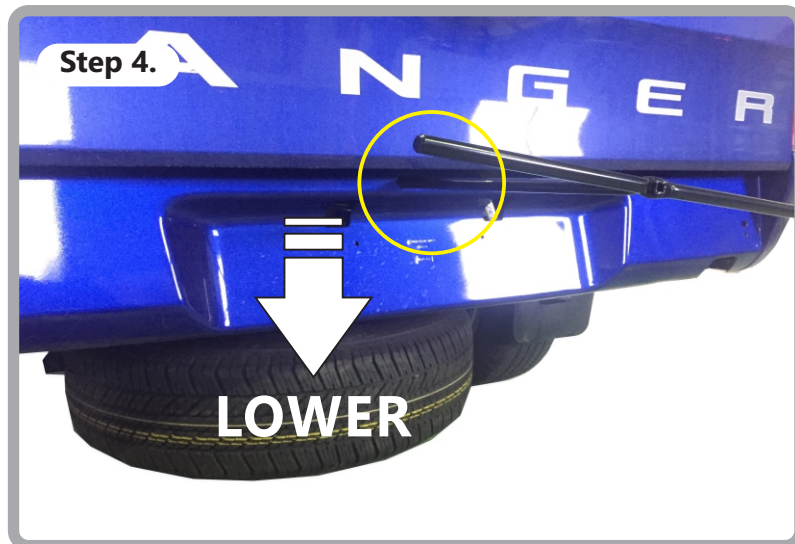
Unplug Reverse Sensor Plug if Vehicle is Equipped with Reverse Sensors.



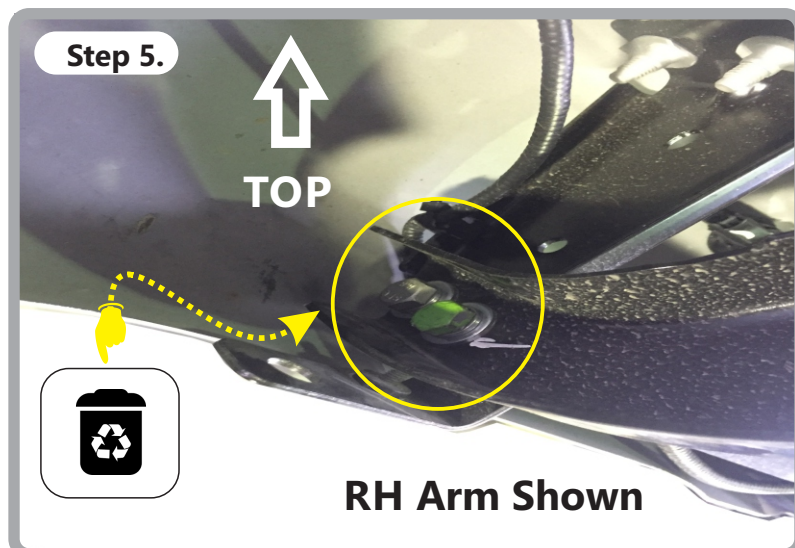
Unplug Number Plate Light From Body. Remove 2 x Clips From Body. Do Not Damage Clips During Removal.



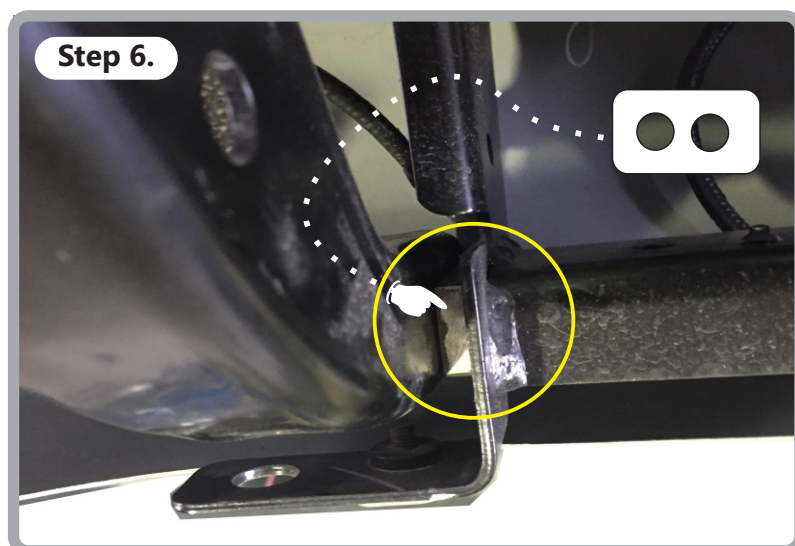
Remove 2 x M12 Bolts (18mm Socket) on LH and RH Chassis Rails. Retain Bolts For Fitting of The Towbar.



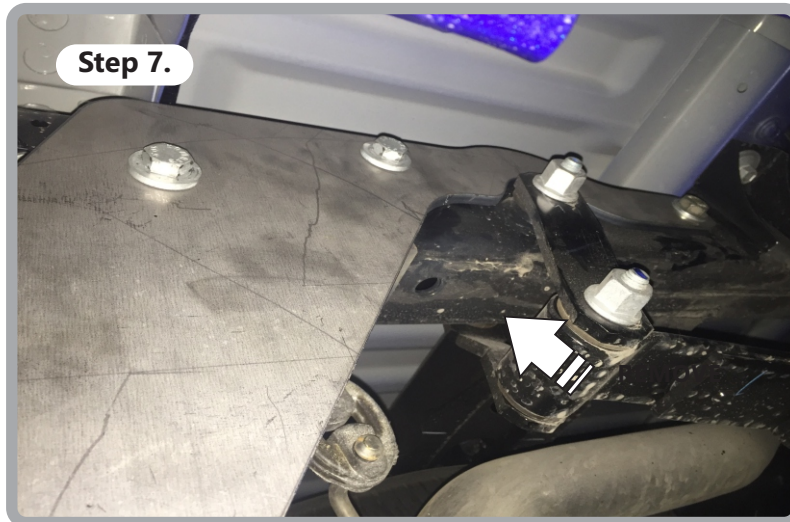
Lower Spare Wheel.



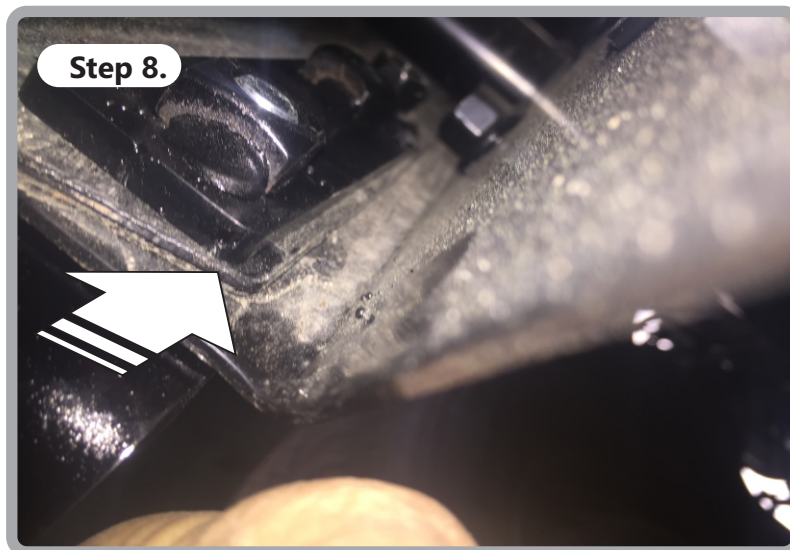
Remove 2 x M10 (13mm Socket) Bolts From Both Bumper Arms and Discard.



Insert Bumper Spacers on LH & RH Sides, Use Bolts Supplied and Torque to 65Nm.



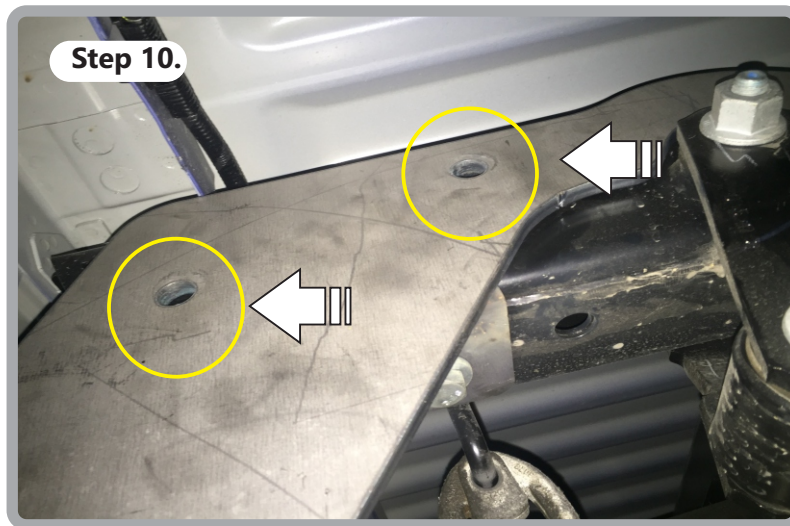
Offer up Towbar and Fasten Bolts on Outside of each Chassis Rail. Use M12 Bolts Retained from Step 3.



Insert Nut Plates into Each Chassis Rail



Insert Bolts Into Underside of Both Chassis Rails. Item 18 x 4 and Item 16 x 4. Use 18mm Socket and Torque to 95Nm



Remove the Two Most Rearward Bolts.



Refit Bumper, Torque Remaining x 6 M12 Bolts to 95Nm.
(18mm Socket). Plug in Harness.



Raise Spare Wheel, Make Final Check of Towbar and Check
Bumper Alignment.